

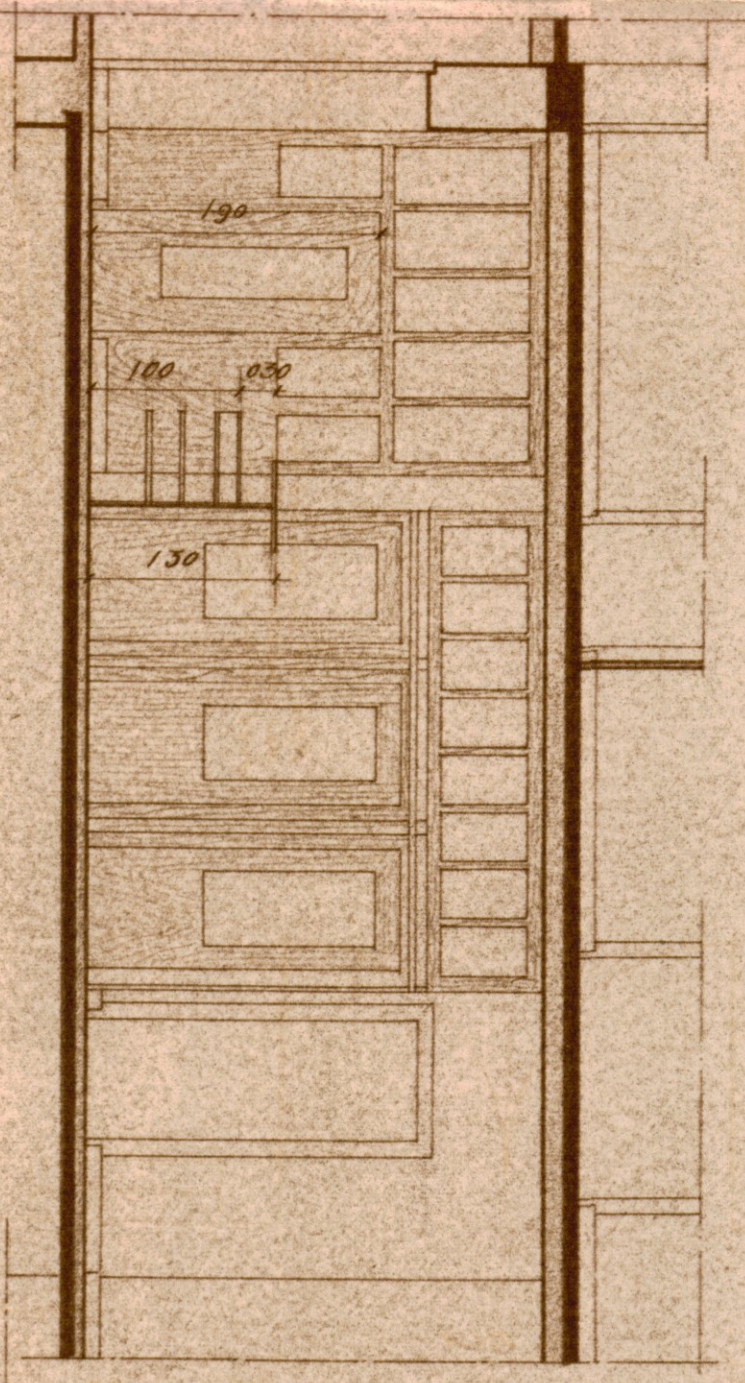
VILLE DE SAINT-DENIS

AMENAGEMENT DE LA POSTE

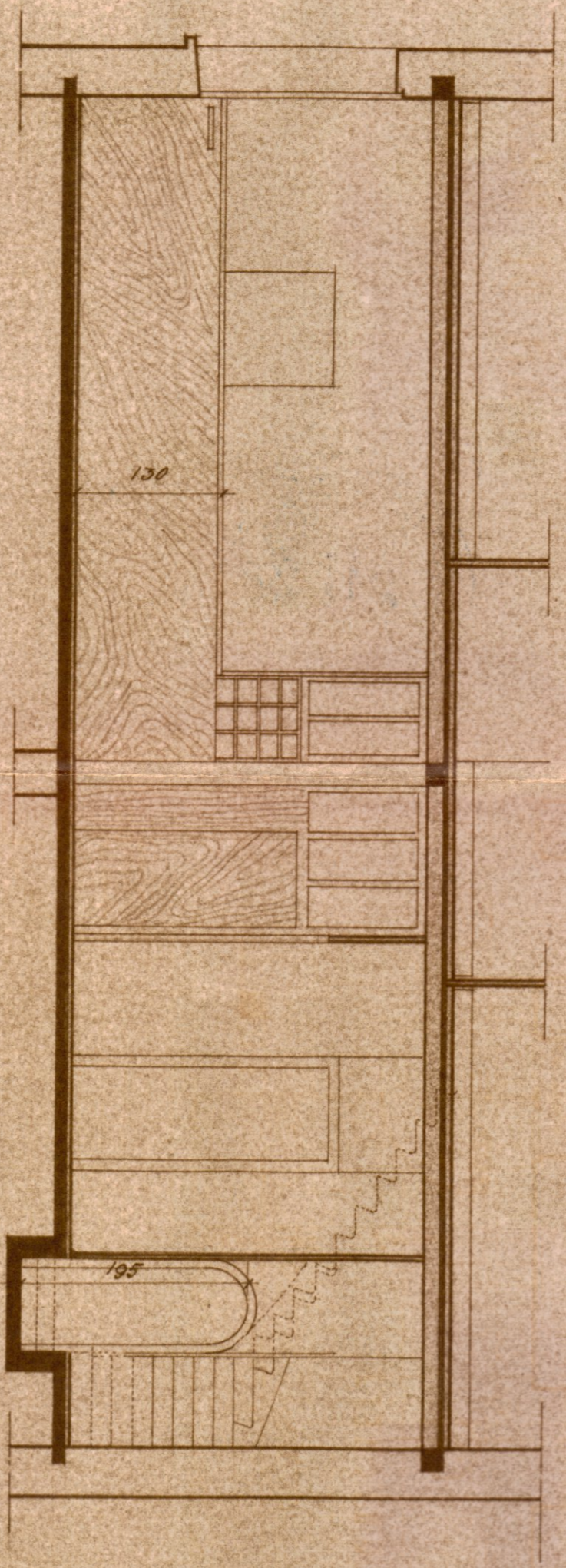
PLANS ET COUPE/
ECHELLE: 0,02 P.M.

VU POUR TRANSMISSION
AU SERVICE DES PERMIS DE CONSTRUIRE

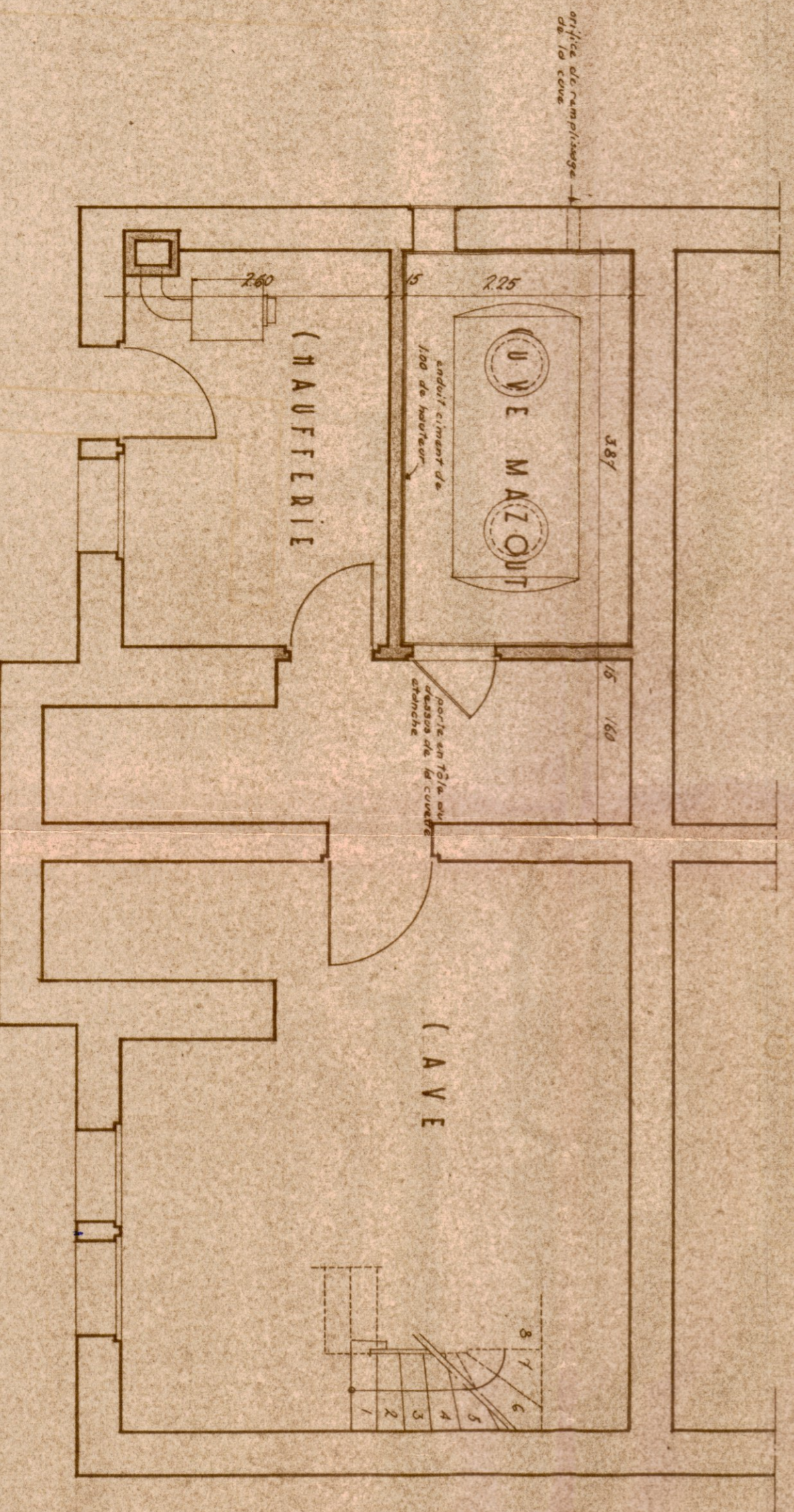
N° 28 031 556
ROYAN LE 19/04/1956
L'ARCHITECTE CONSUL
SIGNÉ : SIMON
VU ET ACCÉPTÉ
LE MAIRE



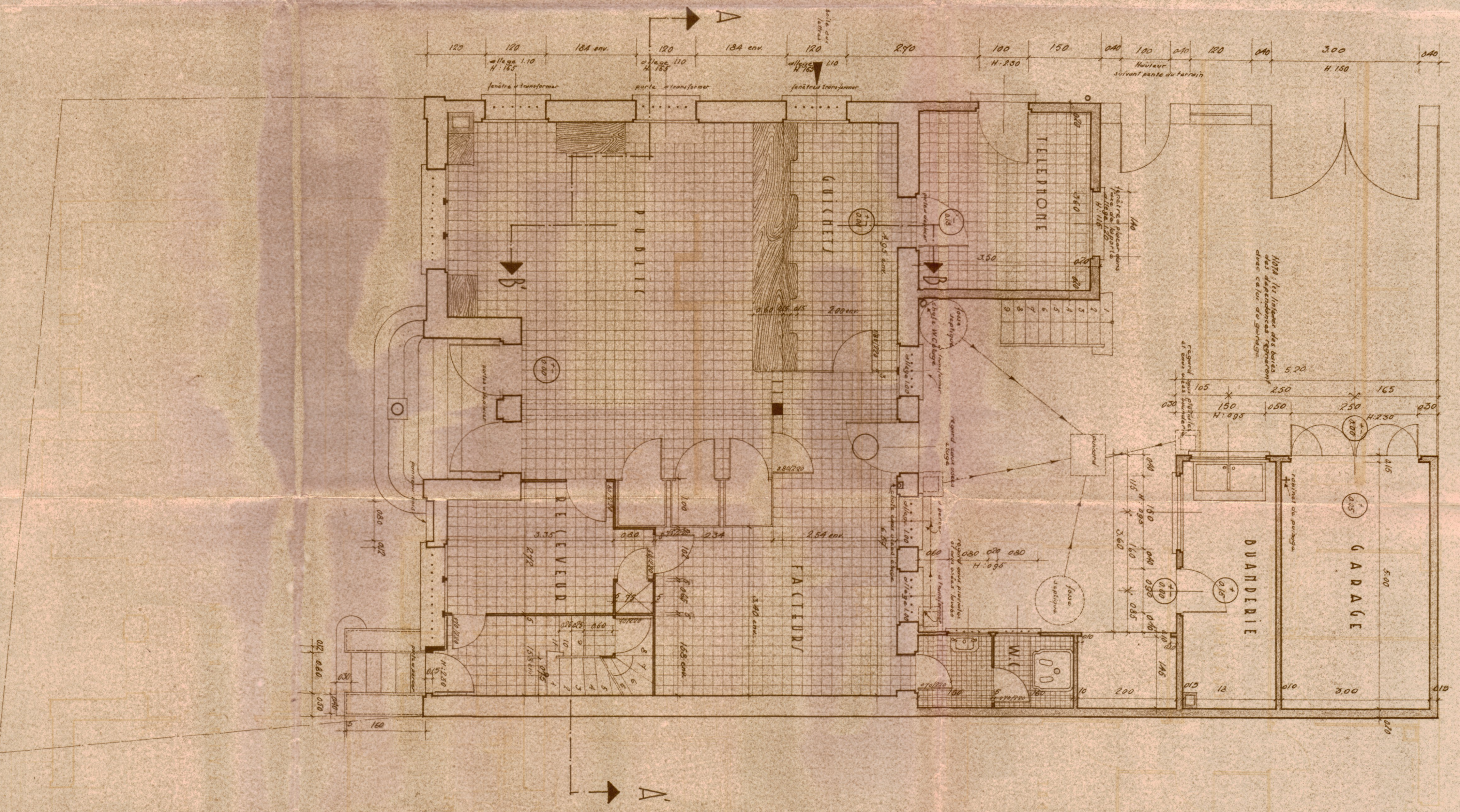
COUPE B-B



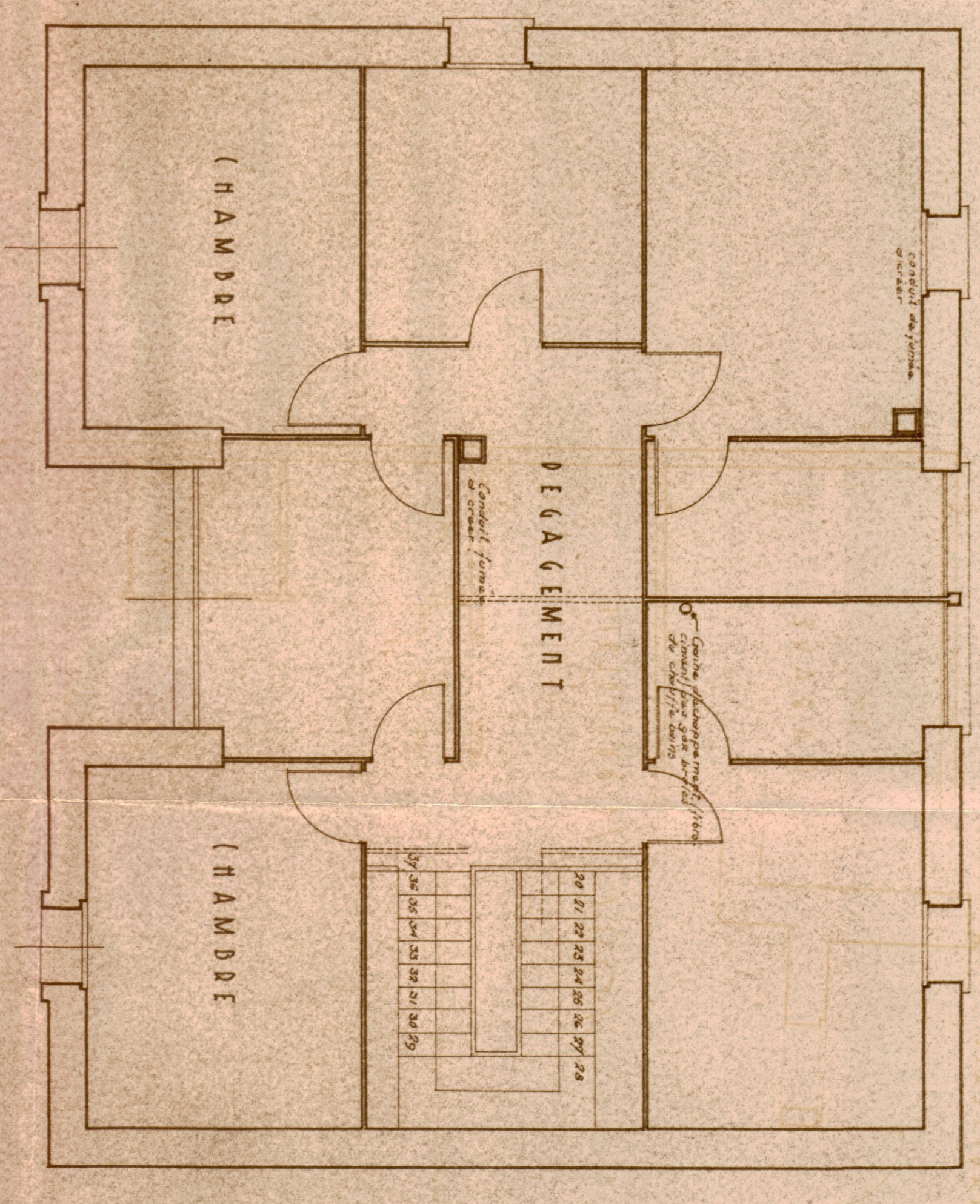
COUPE A-A



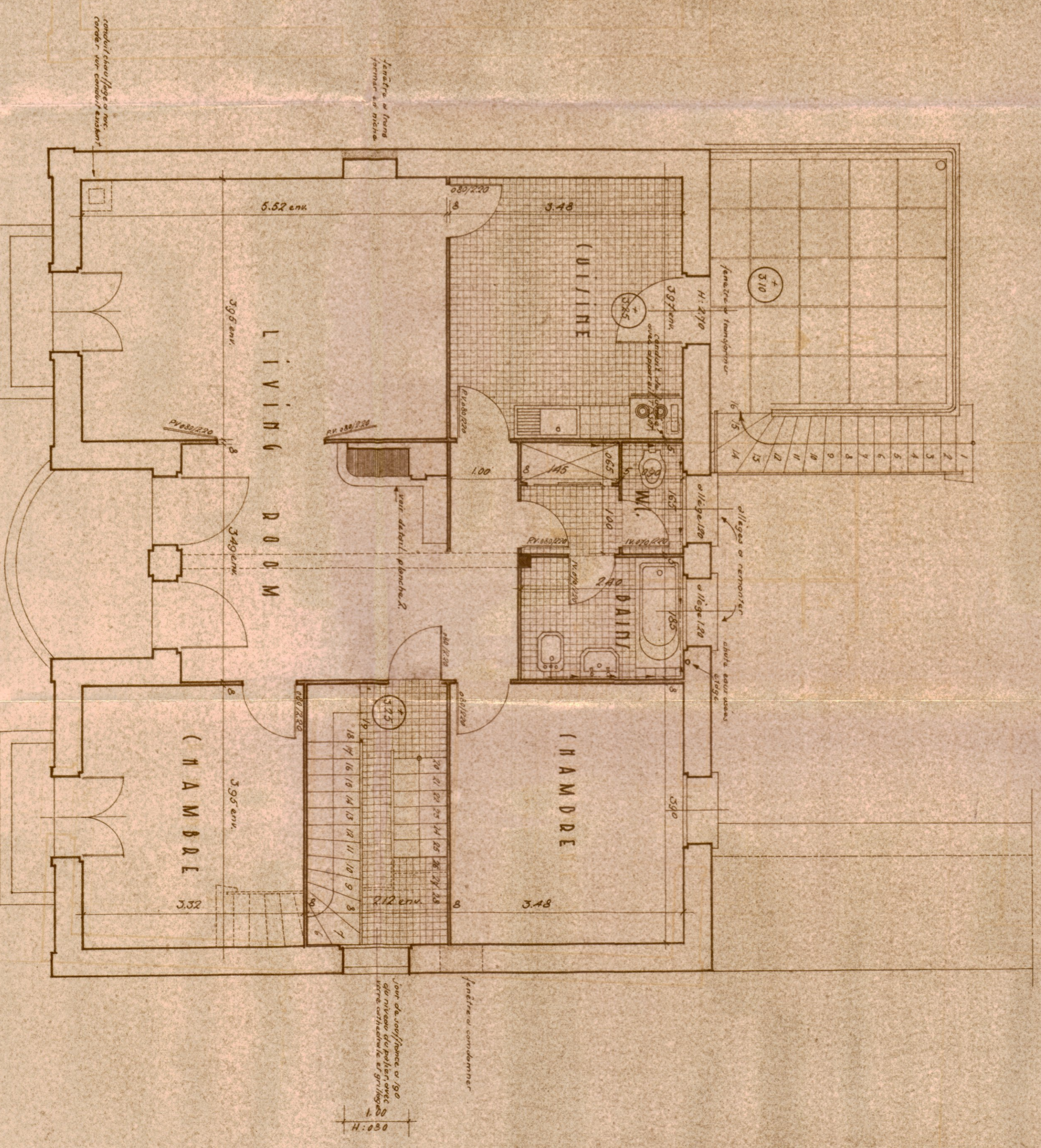
SOUS SOL



REZ-DE-CHAUSSEE



2^{ème} ETAGE



1^{er} ETAGE